

Bilateral International Investments: The Big Sur?

Reproducibility Check Results (second submission)

Ivonne Lara Cortes and Luis Eduardo San Martin
dimeanalytics@worldbank.org

June 22, 2023

Main findings

- ✓ The code ran in a new computer
- ✓ All the code outputs are stable over successive runs of the code
- ✓ All results that do not use restricted-access data were reproduced by the code

System specifications

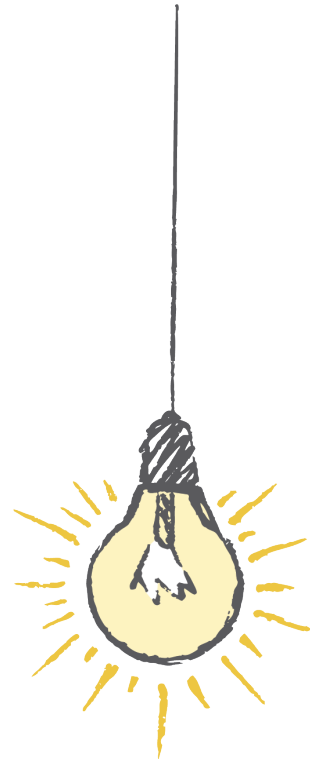
Results were attempted to be reproduced in a computer with the following specifications:

- OS: Windows 10 Enterprise, version 21H2
- Processor: Intel(R) Core(TM) i7-8665U CPU @ 1.90GHz 2.11 GHz
- Memory available: 15.8 GB
- Software version: Stata 16.1

List of exhibits and reproducibility status

Results in the Main Section of the Paper

- **Figure 1** All results reproduced except the source of the numbers for line *Bilateral (our data set)* in Panel A, which was not part of the reproducibility package due to data access restrictions
- **Figure 2** Fully reproduced
- **Figure 3** All results reproduced except Panel A, which was not part of the reproducibility package due to data access restrictions
- **Figure 4** All results reproduced except Panel A, which was not part of the reproducibility package due to data access restrictions. In addition, the reviewers found discrepancies within the range of ± 0.001 in the values plotted



- **Figure 5** All results reproduced except Panel A, which was not part of the reproducibility package due to data access restrictions. In addition, the reviewers found discrepancies within the range of ± 0.001 in the values plotted
- **Figure 6** All results reproduced except Panel A, which was not part of the reproducibility package due to data access restrictions
- **Figure 7** All results reproduced except Panel A, which was not part of the reproducibility package due to data access restrictions
- **Table 1** Fully reproduced
- **Table 2** Fully reproduced
- **Table 3** All results reproduced except Panel A, which was not part of the reproducibility package due to data access restrictions
- **Table 4** All results reproduced except Panel B, columns *Bank Loans and Deposits* (2011 and 2018), which was not part of the reproducibility package due to data access restrictions
- **Table 5** Fully reproduced
- **Table 6** All results reproduced except Panel A, which was not part of the reproducibility package due to data access restrictions
- **Table 7** All results reproduced except Panel A, which was not part of the reproducibility package due to data access restrictions
- **Table 8** All results reproduced except Panel A, which was not part of the reproducibility package due to data access restrictions
- **Table 9** All results reproduced except Panel A, which was not part of the reproducibility package due to data access restrictions

Results in the Appendix

- **Appendix Table 1** Fully reproduced
- **Online Appendix Figure 1** All results reproduced except lines *Bank Loans and Deposits* for Panel A and Panel B, which were not part of the reproducibility package due to data access restrictions
- **Online Appendix Figure 2** All results reproduced except Panel A, which was not part of the reproducibility package due to data access restrictions
- **Online Appendix Figure 3** All results reproduced except Panel A, which was not part of the reproducibility package due to data access restrictions. In addition, the reviewers found discrepancies within the range of ± 0.001 in the values plotted

- **Online Appendix Figure 4** All results reproduced except Panel A, which was not part of the reproducibility package due to data access restrictions. In addition, the reviewers found discrepancies within the range of ± 0.001 in the values plotted
- **Online Appendix Table 1** Fully reproduced
- **Online Appendix Table 2** Fully reproduced
- **Online Appendix Table 3** Fully reproduced
- **Online Appendix Table 4** Fully reproduced
- **Online Appendix Table 5** All results reproduced except Panel A, which was not part of the reproducibility package due to data access restrictions. In addition, the reviewers found discrepancies within the range of ± 0.001 in the values plotted