

Demand for Safe Spaces

Kristoffer Bjärkefur, dimeanalytics@worldbank.org

Main findings

- ✓ The code ran in a new computer
- ✓ All the code outputs are stable over successive runs of the code
- ✓ All results that do not use restricted-access data were reproduced by the code. Data needs to be requested as described in README.pdf

System specifications

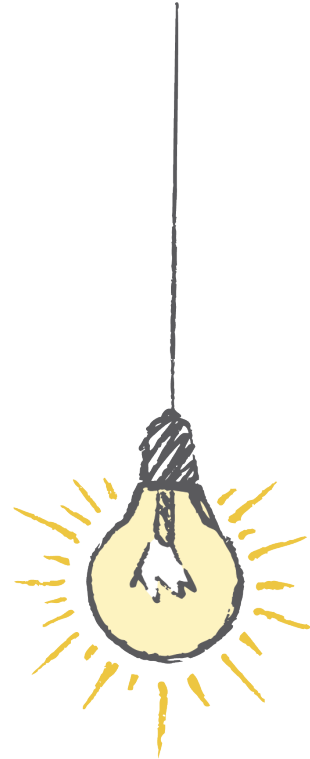
Results were attempted to be reproduced in a computer with the following specifications:

- OS: Windows 10 Enterprise, version 21H2
- Processor: Intel(R) Core(TM) i7-8665U CPU @ 1.90GHz 2.11 GHz
- Memory available: Example: 15.8 GB
- Software version: Stata 17.0

List of exhibits and reproducibility status

Results in the main paper

- **Figure 1: Crowdsourcing app interface across different phases of the study** Does not apply. Not a figure with results.
- **Figure 2: Rides sequence and take-up of reserved space - Take up of reserved space over common ride sequence** Graph reproduces.
- **Figure 3: Take-up of reserved space by opportunity cost** Graphs and numbers in graphs reproduce.
- **Figure 4: Joint distribution of take-up and harassment by presence of men** Graph reproduces.
- **Figure 5: IAT D-Score distribution by test type and gender** Graphs reproduce.
- **Table 1: Sample description** All numbers in the table reproduce.
- **Table 2: Revealed preferences, overall and by ride condition** All numbers in the table reproduce.



- **Table 3: Impact of randomized assignment of space on reported harassment, overall and by ride condition** All numbers in the table reproduce.
- **Table 4: Revealed preferences by rider risk perception** All numbers in the table reproduce.
- **Table 5: Back-of-envelope estimates of cost of harassment** All numbers in the table reproduce.

Results in Appendix A

- **Figure A1: SuperVia lines and riders home location**
The R-script that generates this map requires a shape file that is not included in the reproducibility package.
- **Figure A2: Congestion in the system by time window** The graph reproduces but not exactly. The differences are so small that it does not change the over-all stories.
- **Figure A3: Congestion in the system by time window** Graph reproduces.
- **Figure A4: Presence of male riders in reserved space over stations**
The R-script that generates this map requires a shape file that is not included in the reproducibility package.
- **Figure A5: Difference in presence of male riders between spaces**
Graph and number in the graph reproduce.
- **Figure A6: Correlation between take-up of reserved space and presence of male riders** Graph reproduces.
- **Figure A7: Rides sequence and take-up of reserved space** Graphs reproduce.
- **Figure A8: Advantages of reserved space: unprompted responses from participants of rider crowdsourcing** Graph and numbers in the graph reproduce.
- **Figure A9: Take-up of women-reserved space with positive opportunity cost: stated and revealed preferences** Graph reproduces.
- **Figure A10: Sorting of men between spaces** Graph reproduces.
- **Figure A10: First and second order beliefs: percent of respondents who believe women who ride the public space are more open to advances than those who ride the women-reserved space**
Graph reproduces.

- **Table A1: Sample size description** All numbers in the table reproduce.
- **Table A2: Individual pipeline of rides and payments per for riding public and reserved space per rides phase** No table matching this table is generated in the script.
- **Table A4: Correlation between platform observations data and rider reports** All numbers in the table reproduce.
- **Table A5: IAT: Robustness check for priming with survey questions** All numbers in the table reproduce.
- **Table A6: Test for order effects in on screen presentation of public / reserved space** All numbers in the table reproduce.
- **Table A7: Adjustment on other margins** All numbers in the table reproduce.
- **Table A8: Impact of randomized assignment of car on fear and subjective well-being, overall and by ride condition** All numbers in the table reproduce.
- **Table A9: Social norms survey** All numbers in the table reproduce.
- **Table A10: IAT results** All numbers in the table reproduce.

Results in Appendix B

The tables in this appendix are not tables with numeric results.