

Greener is not always pricier: Ecolabeling and price premium in the tourism industry

Reproducibility Verification Report

Zachary Kevala

Saron Hailu

Maria Reyes Retana

Luis Eduardo San Martin

PRWP Reproducibility Verification

reproducibility@worldbank.org

August 31, 2023

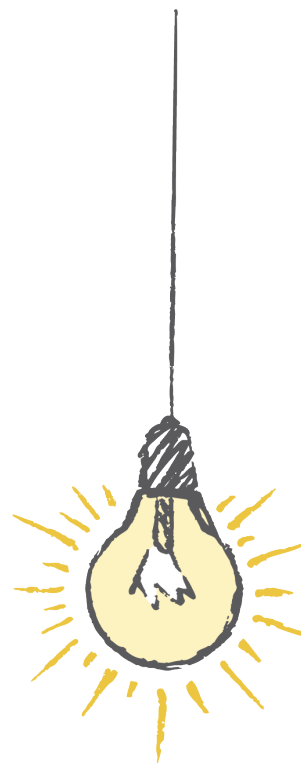
Main findings

- ✓ The Stata part of the code ran on a new computer after changing the directory in line 2 of the do-file *reprod_analysis.do* and installing the external packages *outreg2* and *coefplot*.
- ✓ The Python part of the code ran on a new computer after generating the Stata results and changing the directory in line 21 of the script *descriptives.py*.
- ✓ All the paper exhibits were reproduced with the reproducibility package provided.

System specifications

Paper exhibits were attempted to be reproduced in three computers with the following specifications:

- Computer 1:
 - OS: Windows 10 Enterprise, version 21H2
 - Processor: Intel(R) Core(TM) i7-8665U CPU @ 1.90GHz 2.11 GHz
 - Memory available: 15.8 GB
 - Software version: Stata 16.1, Python 3.7
- Computer 2:
 - OS: Windows 11 Home, Versions 22H2
 - Processor: Intel(R) Core(TM) i5-9300H CPU @ 2.40GHz 2.40 GHz
 - Memory available: 7.85 GB



- Software version: Stata 17.0¹
 - Computer 3:
 - OS: MacOS Ventura 13.4
 - Processor: Dual-Core Intel Core i3, 1.1 GHz
 - Memory available: 8 GB 3733 MHz LPDDR4X
 - Software version: Stata 16.1, Python 3.11.4
- ¹ only the Stata part of the code was run in this computer

List of exhibits and reproducibility status

Results in the Main Section of the Paper

- **Table 1** Does not apply: the exhibit does not show analysis results
- **Figure 1** Does not apply: the exhibit does not show analysis results
- **Table 2** Does not apply: the exhibit does not show analysis results
- **Table 3** Results reproduced. Rounding adjustments were introduced in the paper exhibit that are not displayed in the code output. The exhibit was compared against the results produced by line 19 of do-file *reprod_analysis.do*
- **Figure 2** Reproduced
- **Table 4** Reproduced. The table is not exported directly within the code, but it can be verified by printing the Pandas dataframe *final_df* created in *descriptives.py*
- **Figure 3** Results reproduced. Display adjustments in the legend were introduced in the paper exhibit that are not displayed in the code output
- **Table 5** Results reproduced. Some of the rows included in the code output are not in the paper exhibit. The exhibit was compared against the file *price_det.xml*
- **Figure 4** Results reproduced. Display adjustments in the legend were introduced in the paper exhibit that are not displayed in the code output. The exhibit was compared against the results produced by line 75 of do-file *reprod_analysis.do*
- **Table 6** Results reproduced. Some of the rows included in the code output are not in the paper exhibit. Column 1 of the exhibit was compared against column 3 of *price_det.xml* and columns 2-3 of the exhibit were compared against columns 2-3 of *hetero.xml*

- **Figure 5** Results reproduced. Adjustments in the figure and axis titles were introduced in the paper exhibit that are not displayed in the code output. The exhibit was compared against the results produced by lines 82-86 of do-file *reprod_analysis.do*
- **Figure 6** Results reproduced. Adjustments in the figure and axis titles were introduced in the paper exhibit that are not displayed in the code output. The exhibit was compared against the results produced by lines 89-93 of do-file *reprod_analysis.do*