

A fish cartel for Africa

Nihaa Sajid

Luis Eduardo San Martin

PRWP Reproducibility Verification

reproducibility@worldbank.org

October 10, 2023

Main findings

- ✓ The code ran in a new computer
- ✓ All the code outputs are stable over successive runs of the code
- ✓ All results were reproduced by the code

System specifications

Results were attempted to be reproduced in a computer with the following specifications:

- OS: Windows 10 Enterprise, version 21H2
- Processor: Intel(R) Xeon(R) Gold 6226R CPU @ 2.9GHz (20 CPUs)
- Memory available: 128 GB
- Software version: R 4.2.1

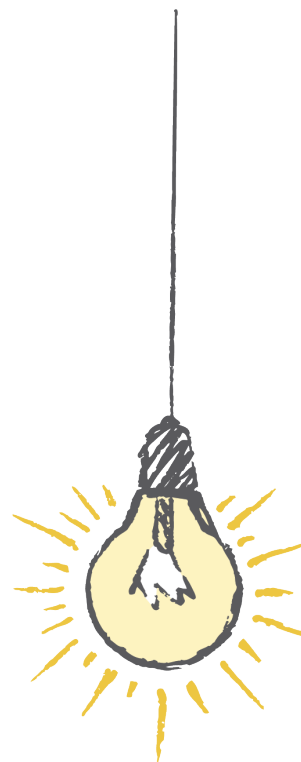
List of exhibits and reproducibility status

Results in the Main Section of the Paper

- **Figure 1** Reproduced
- **Table 1** Reproduced
- **Figure 2a** Reproduced
- **Figure 2b** Reproduced
- **Figure 2c** Reproduced
- **Figure 2d** Reproduced

Results in the supplementary materials

- **Figure S1** Reproduced
- **Figure S2a** Reproduced



- **Figure S2b** Reproduced
- **Figure S3a** Reproduced
- **Figure S3b** Reproduced
- **Figure S3c** Reproduced
- **Figure S3d** Reproduced
- **Figure S4a** Reproduced
- **Figure S4b** Reproduced
- **Figure S4c** Reproduced
- **Figure S4d** Reproduced
- **Figure S5a** Reproduced
- **Figure S5b** Reproduced
- **Figure S5c** Reproduced
- **Figure S5d** Reproduced
- **Figure S6a** Reproduced
- **Figure S6b** Reproduced
- **Figure S6c** Reproduced
- **Figure S6d** Reproduced
- **Figure S7a** Reproduced
- **Figure S7b** Reproduced
- **Figure S7c** Reproduced
- **Figure S7d** Reproduced
- **Figure S8a** Reproduced
- **Figure S8b** Reproduced
- **Figure S8c** Reproduced
- **Figure S8d** Reproduced
- **Figure S9a** Reproduced
- **Figure S9b** Reproduced
- **Figure S9c** Reproduced

- **Figure S9d** Reproduced
- **Figure S10a** Reproduced
- **Figure S10b** Reproduced
- **Figure S10c** Reproduced
- **Figure S10d** Reproduced
- **Figure S11a** Reproduced
- **Figure S11b** Reproduced
- **Figure S11c** Reproduced
- **Figure S11d** Reproduced
- **Figure S12a** Reproduced
- **Figure S12b** Reproduced
- **Figure S12c** Reproduced
- **Figure S12d** Reproduced
- **Figure S13a** Reproduced
- **Figure S13b** Reproduced
- **Figure S13c** Reproduced
- **Figure S13d** Reproduced
- **Figure S14a** Reproduced
- **Figure S14b** Reproduced
- **Figure S14c** Reproduced
- **Figure S14d** Reproduced
- **Figure S15a** Reproduced
- **Figure S15b** Reproduced
- **Figure S15c** Reproduced
- **Figure S15d** Reproduced
- **Figure S16a** Reproduced
- **Figure S16b** Reproduced
- **Figure S16c** Reproduced

- [Figure S16d](#) Reproduced
- [Figure S17a](#) Reproduced
- [Figure S17b](#) Reproduced
- [Figure S17c](#) Reproduced
- [Figure S17d](#) Reproduced
- [Figure S18a](#) Reproduced
- [Figure S18b](#) Reproduced
- [Figure S19](#) Reproduced
- [Figure S20a](#) Reproduced
- [Figure S20b](#) Reproduced
- [Figure S20c](#) Reproduced
- [Figure S20d](#) Reproduced
- [Figure S21a](#) Reproduced
- [Figure S21b](#) Reproduced
- [Figure S21c](#) Reproduced
- [Figure S21d](#) Reproduced
- [Figure S22a](#) Reproduced
- [Figure S22b](#) Reproduced
- [Figure S22c](#) Reproduced
- [Figure S22d](#) Reproduced
- [Figure S23a](#) Reproduced
- [Figure S23b](#) Reproduced
- [Figure S23c](#) Reproduced
- [Figure S23d](#) Reproduced
- [Figure S24a](#) Reproduced
- [Figure S24b](#) Reproduced
- [Figure S24c](#) Reproduced
- [Figure S24d](#) Reproduced

- **Figure S25a** Reproduced
- **Figure S25b** Reproduced
- **Figure S25c** Reproduced
- **Figure S25d** Reproduced
- **Figure S26a** Reproduced
- **Figure S26b** Reproduced
- **Figure S26c** Reproduced
- **Figure S26d** Reproduced
- **Figure S27a** Reproduced
- **Figure S27b** Reproduced
- **Figure S27c** Reproduced
- **Figure S27d** Reproduced
- **Table S1** Reproduced. This exhibit was compared against *totresult-tab_twice_baseline_threshold.tex*
- **Table S2** Reproduced. The exhibit was compared against *totresult-tab_bbmsy_point6.tex*
- **Table S3** Reproduced. The exhibit was compared against *totresult-tab_bbmsy_point4.tex*
- **Table S4** Reproduced. The exhibit was compared against *totresult-tab_eta_point5.tex*
- **Table S5** Reproduced. The exhibit was compared against *totresult-tab_eta_1point5.tex*
- **Table S6** Reproduced. The exhibit was compared against *totresult-tab_epsilon_1point5.tex*
- **Table S7** Reproduced. The exhibit was compared against *totresult-tab_epsilon_2point5.tex*
- **Table S8** Reproduced. The exhibit was compared against *totresult-tab_regional.tex*
- **Table S9** Reproduced. The exhibit was compared against *totresult-tab_pna.tex*
- **Table S10** Reproduced. The exhibit was compared against *totresulttab_pna_half_access_catch.tex*
- **Table S11** Reproduced. The exhibit was compared against *totresulttab_pna_bbmsy_1point3.tex*